

To navigate this Honda Civic 5dr guide: use the interactive menu bar, above, by clicking on the relevant tab



All-new Honda Civic e:HEV Range

To navigate this Honda Civic 5dr guide: use the interactive menu bar, above, by clicking on the relevant tab



The All-new Honda Civic e:HEV 5dr

The all-new Civic e:HEV 5dr is designed with a clean, aerodynamically efficient and stylish look, with the latest Honda SENSING suite of advanced safety and driver assistive systems.

Longer and lower than the outgoing model, the All-new Civic is more spacious and comfortable than ever, with a generous 410 litre boot (404 litres on Advance) and Smart Entry.

Standard equipment embraces the latest technology, with LED lights front and rear on all models and careful attention to aerodynamics for maximum efficiency.

Under the bonnet is a refined and powerful 2.0-litre e:HEV engine developing 184PS and driving through

e-CVT Transmission for effortless performance. Class-leading combined fuel consumption of up to 60.1mpg and CO₂ emissions as low as 108g/km on the WLTP cycle make the All-new Civic one of the most efficient cars in its segment.

With a 0-62mph time of just 7.8secs and four drive modes – Individual, Sport, Normal and Eco – to choose from, the All-new Civic may be described as the ‘Driver’s Hybrid’.

Two trims - Sport & Advance – each offer distinct appeal, while premium quality and lavish equipment go with the latest driving and communications technologies to create a car designed for the moment.



The one-piece resin tailgate offers a 20% weight reduction and opens on to the generous 410 litre boot (404 litres on Advance models)

[Click HERE to see inside the Civic e:HEV](#)

To navigate this Honda Civic 5dr guide: use the interactive menu bar, above, by clicking on the relevant tab



Premium quality design and materials with clean styling give the All-new Civic an upmarket feel



Above: as standard, Sport models come with a 7" dash display, above, while Advance has a 10.2" high definition TFT screen

Below: attractive honeycomb design extends across the dashboard for outstanding visual flair



Inside the All-new Civic e:HEV

Premium quality and clever, attractive design are the key themes inside the All-new Honda Civic.

The dashboard design uses physical buttons and rotary knobs for a more tactile and satisfying operating experience that is easier to use while driving.

Keeping you connected is the new 9" touchscreen which allows you to view essential information quickly and easily and features a clean smartphone-style display with large buttons and Apple CarPlay® / Android Auto™ integration.

Highly efficient all-round ventilation is achieved through the stylish honeycomb moulding which extends across the dashboard to give more uniform fresh air distribution.

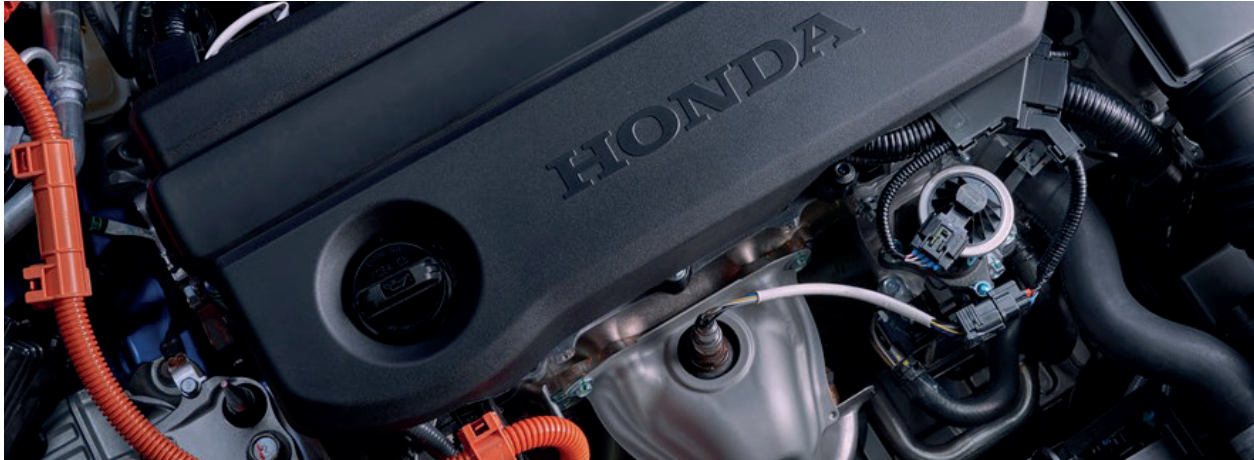
Standard equipment is lavish across the range, with all models fitted as standard with Satellite Navigation, Heated Front Seats with powered lumbar support, Privacy Glass, Rear View Camera and Smart Entry. Advance adds full power seat operation, a wide-opening glass roof and a BOSE® Audio System in line with its premium positioning.



BOSE® Premium Sound System

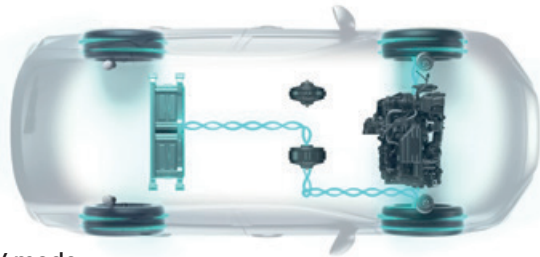
Fitted as standard to Advance models, the BOSE® Premium Audio System with 12 speakers and Sub-Woofer gives concert hall levels of sound reproduction

[Click HERE for previous page](#)



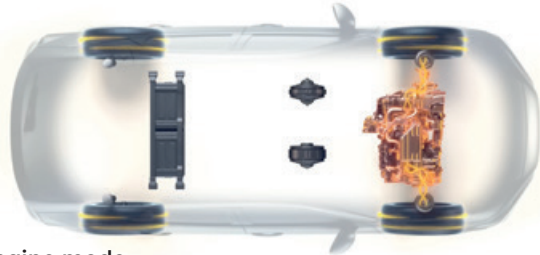
2.0 e:HEV technology

The All-new Honda Civic's self-charging hybrid drivetrain achieves an exceptional blend of effortless performance and impressive fuel economy for smooth and efficient driving



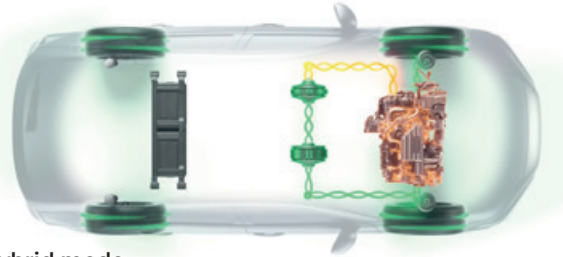
EV mode

Draws energy from the battery with the electric motor driving the front wheels and instant acceleration



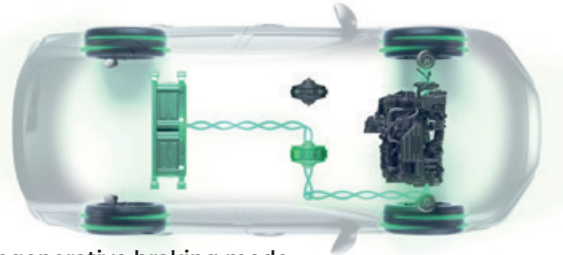
Engine mode

Engine/front wheels direct lock-up for high speed driving. Greater efficiency at speed compared with electric motors



Hybrid mode

Engine powers the electric motors, retaining electric car-like levels of performance efficiency and smoothness



Regenerative braking mode

Usual energy lost while braking is returned to the battery via the electric motor to ensure a constant supply of electricity

Honda SENSING: technology for safety



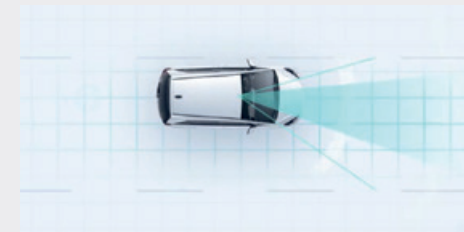
Adaptive Cruise Control

Includes Low Speed Following featuring a class-leading wide-view camera to maintain a set cruising speed and distance relative to the vehicle in front. If the vehicle stops, ACC will decelerate and stop your car



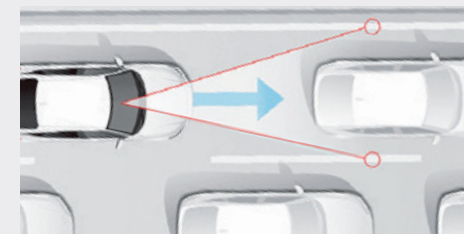
Blind Spot Information

This clever device, with detection increased from 3m to 25m, makes lane changes and overtaking safer, warning you when vehicles are in your blind spot by illuminating a light in your door mirror



Lane Keep Assist System

Helps keep you in the middle of your lane, providing a less stressful driving experience by reducing the need for steering correction movements on the motorway



Traffic Jam Assist

This function enables the All-new Civic to stop, start and steer, reducing driver fatigue in traffic jam situations. The Assist range is extended down to 0mph rather than 40mph previously



Intelligent Speed Limiter

Combines the existing adjustable speed limiter function with Traffic Sign Recognition, to set the speed limit to that which Traffic Sign Recognition detects

To navigate this Honda Civic 5dr guide: use the interactive menu bar, above, by clicking on the relevant tab



All-new Civic Sport 2.0 e:HEV 5dr

With highly defined sporting overtones, the All-new Civic Sport comes with striking 18" Black Alloy Wheels, Front Fog Lights, Black Exterior trim detailing with Black Window Frames and Door Mirror Caps for a distinctive look. Inside, Combi Fabric/Leather trim adds to convenient touches such as Auto Dimming Rear View Mirror and Wireless Charging.



All-new Honda Civic Sport 2.0 e:HEV 5dr

Price (P11D) ¹	£36,240
Powertrain	2.0L e:HEV i-MMD
Transmission	e-CVT
Driven wheels	Front Wheel Drive
Power (PS)	184
Max Torque (Nm)	315
0 - 100 km/h (sec)	7.9
Combined mpg	56.5
Combined l/100km	5.0
Combined CO ₂ (g/km)	113
BIK % (2023/24) ¹	27
BIK tax (£) (2023/24) ²	£164 / £327
Boot Capacity (l)	415
Width (mm)	1,802
Length (mm)	4,551
Height (mm)	1,408
Weight (kg)	1,533

¹Figures dependent on exact specification.

²Quoted monthly for 20%/40% tax payers in 2023/24. ³In 2023/24. ⁴Over 60,000 miles. Unleaded at 188.7p/litre. For a full emission statement, please refer to the final page

To navigate this Honda Civic 5dr guide: use the interactive menu bar, above, by clicking on the relevant tab



All-new Civic Advance 2.0 e:HEV 5dr

At the top of the All-new Civic range, Advance models add premium and luxury features including a wide-opening Glass Roof, BOSE® Premium Audio System with 12 speakers and Sub-Woofer, advanced Matrix Adaptive Driving Beam Headlights with ACL, Power Front Seats and an enhanced 10.2" TFT Meter Display.



All-new Honda Civic Advance 2.0 e:HEV 5dr

Price (P11D) ¹	£39,540
Powertrain	2.0L e:HEV i-MMD
Transmission	e-CVT
Driven wheels	Front Wheel Drive
Power (PS)	184
Max Torque (Nm)	315
0 - 100 km/h (sec)	8.1
Combined mpg	56.5
Combined l/100km	5.0
Combined CO ₂ (g/km)	114
BIK % (2023/24) ¹	27
BIK tax (£) (2023/24) ²	£178 / £356
Boot Capacity (l)	409
Width (mm)	1,802
Length (mm)	4,551
Height (mm)	1,408
Weight (kg)	1,533

¹Figures dependent on exact specification.
²Quoted monthly for 20%/40% tax payers in 2023/24. ³In 2023/24. ⁴Over 60,000 miles. Unleaded at 188.7p/litre. For a full emission statement, please refer to the final page

To navigate this Honda Civic 5dr guide: use the interactive menu bar, above, by clicking on the relevant tab

All-new Civic e:HEV: comparisons

Model	Sport	Advance
Blind Spot Information incl. Cross Traffic Monitor	◆	◆
Collision Mitigation Braking and Throttle Control System	◆	◆
Forward Collision Warning	◆	◆
Lane Departure Warning	◆	◆
Lane Keeping Assist System	◆	◆
Low Speed Brake System	◆	◆
Low Speed Following	◆	◆
Road Departure Mitigation	◆	◆
Traffic Jam Assist	◆	◆
Smart Entry and Start	◆	◆
Upholstery	Fabric/Synthetic Leather	Genuine Leather
Drive Modes	Economy/Sport/Normal/Individual	Economy/Sport/Normal/Individual
Hill Start Assist (HSA)	◆	◆
Multi Info Display (inch)	7	10.2
Regenerative Braking/Deceleration Control Paddle	◆	◆
Air Conditioning	Dual Zone Auto	Dual Zone Auto
Auto Dimming Rear View Mirror	◆	◆
Cruise Control - Adaptive	◆	◆
Door Mirrors - Electrically Folding	◆	◆
Front Seat – Driver electrical adjustment (8-way)	–	◆
Front Seat – Passenger electrical adjustment (4-way)	–	◆
Front Seat – Lumbar Support	Driver only/Electric	Driver and Passenger/Electric
Front Seat – Manual Height Adjustment	Driver	Driver/Electric
Heated Seats - Front	◆	◆
Heated Steering Wheel	–	◆
Parking Sensors (Front 4: Rear 4)	◆	◆
Honda CONNECT with navigation (9" touchscreen, AM/FM/DAB, Wireless Apple CarPlay®/ Android Auto™ and live traffic info)	◆	◆
Speakers - Premium Audio	8	12
Speakers - Front Tweeter	–	BOSE®
Speakers - Centre	◆	◆
Subwoofer	–	◆
Wireless Charging	◆	◆
Mirror Colour	Gloss Black	Body colour
Glass Roof – Type	–	Panoramic
Privacy Glass	◆	◆
Window Garnish	Low-Gloss Black	Chrome
Active Cornering Lights	–	◆
Adaptive Driving Beam (ADB)	–	◆
Front Fog Lights	LED	LED
Wheel size and design	18" Alloy, Gloss Black	18" Alloy, two-tone black and diamond cut



For Honda Fleet and Business enquiries, or to discover more about the Honda model range, please call our dedicated team on **01721 723723**, email admin@brownbrotherspeebles.co.uk or visit www.BrownBrothersPeebles.co.uk/honda/

For Business Offers go to
www.BrownBrothersPeebles.co.uk/honda/business-sales

For New Car Range go to
www.BrownBrothersPeebles.co.uk/honda/new-cars

All-new Honda Civic e:HEV Range

Disclaimer: The information provided in this Guide is for general information purposes only and is correct to the best of our knowledge at the date of publication (June 2023). While we have made every effort to ensure the information in this document is accurate, neither Honda (UK) nor the author can be held responsible for any actions or consequences arising from acting on, or refraining from, taking any action as a result of reading this. The fuel consumption you achieve under real life driving conditions, and CO₂ produced, will depend upon a number of factors including the accessories fitted after registration, variations in driving styles, weather conditions and vehicle load. Figures stated are based on a standardised test cycle and may not reflect real world driving, therefore they should be used for comparison purposes only. Customers should only compare vehicles tested to the same technical procedures. There is a new test for fuel consumption and CO₂ figures. You can find out more about the changes brought in by WLTP at <http://wltpfacts.eu/>.